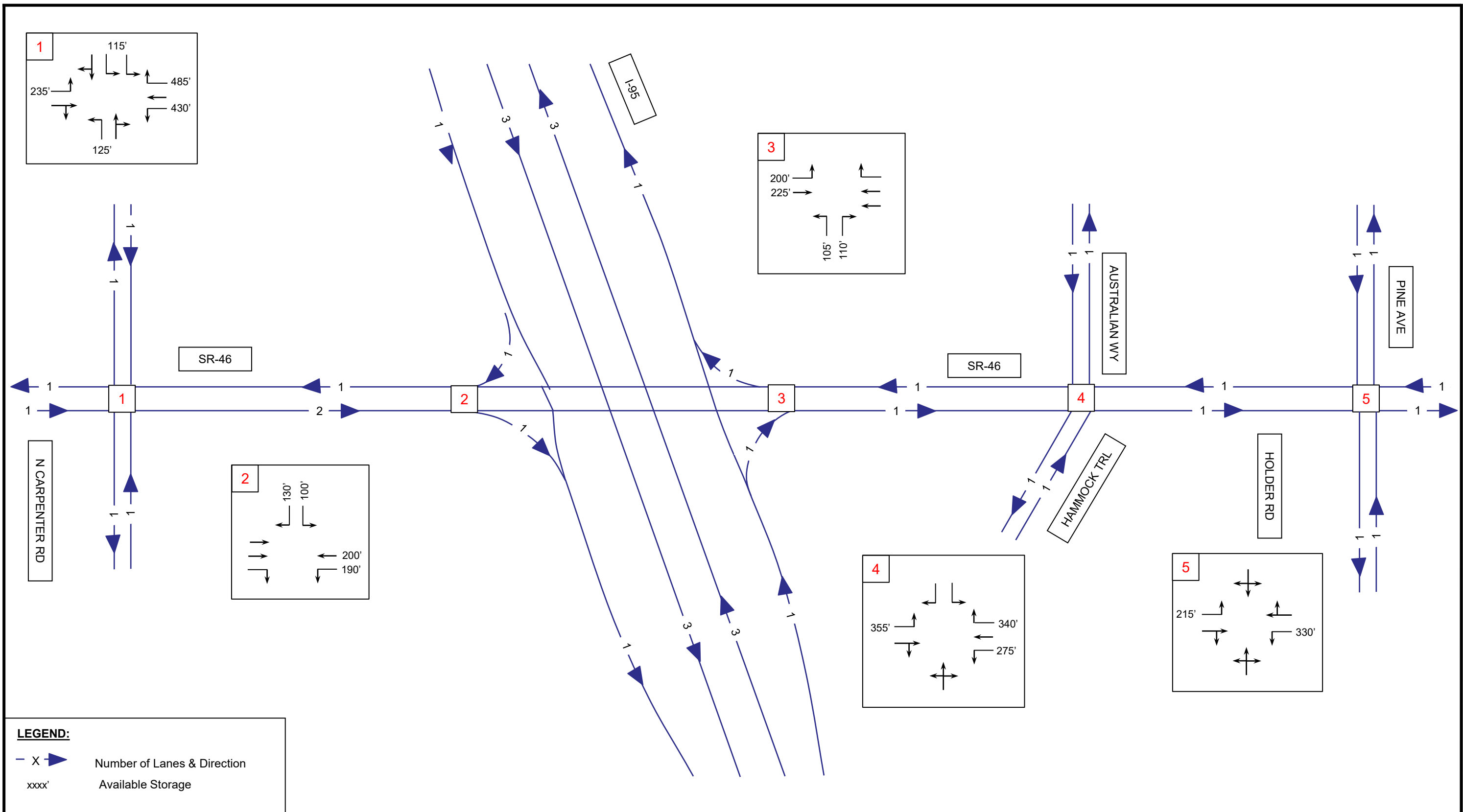


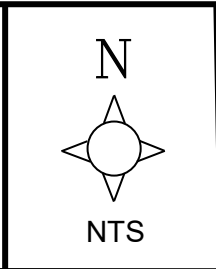
3. PROPOSED IMPROVEMENTS

There are no modifications proposed for the I-95 mainline. The proposed improvements aim to mitigate the existing and anticipated operational deficiencies, provide better progression along SR-46, and to better accommodate the southbound right traffic entering the westbound SR-46 traffic stream. Figure 11 illustrates the proposed lane and intersection configuration. The conceptual plans are included in Appendix H. The proposed improvements are summarized below:

- Signalization of the I-95 Southbound Ramps
- Signalization of the southbound right-turn movement on the Southbound Off-Ramp
- Modifying SR-46 to transition east of North Carpenter Road to a three-lane road with one lane in the westbound direction and two lanes with a lane drop at the I-95 Southbound On-Ramp



I-95 & SR-46 IOAR

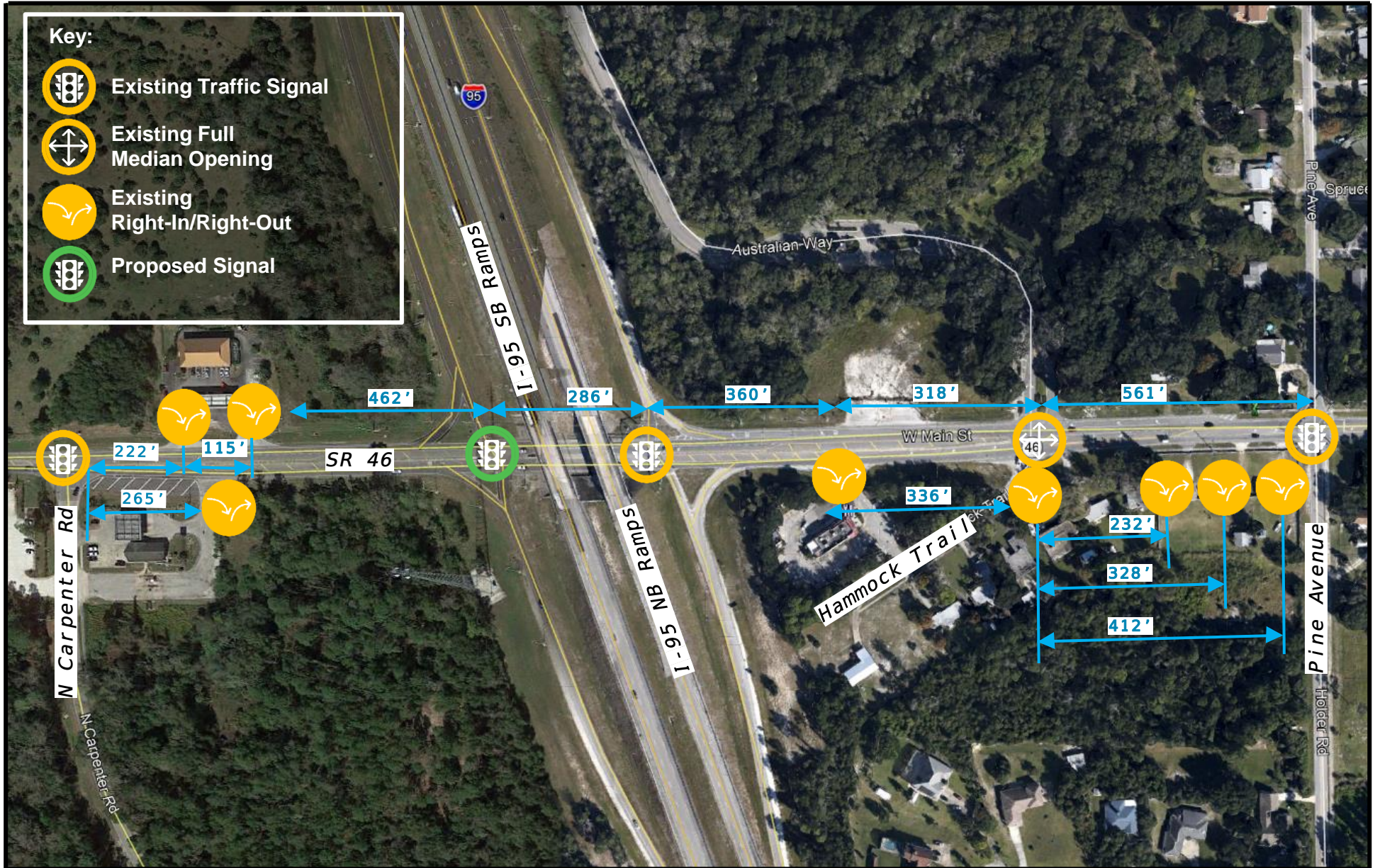


Proposed Intersection Configurations

Project No.: 4607.10

Figure: 11





<p>I-95 at SR-46 IOAR</p>		<p>Access Management</p>		
		<p>Project No.: 4607.10</p>	<p>Figure: 18</p>	